

제15회 대한신경근골격초음파학회 2023년 추계학술대회  
Part I. 고관절, 대퇴 초음파를 위한 기초와 Scanning Points

# 고관절 대퇴 초음파를 위한 In-depth 단면해부학: 임상에서 유의해야 할 고관절, 대퇴 해부학 및 초음파 검사 시 알아두어야 할 구조물

재활의학과 문창원

2023. 11. 04 13:40~14:05

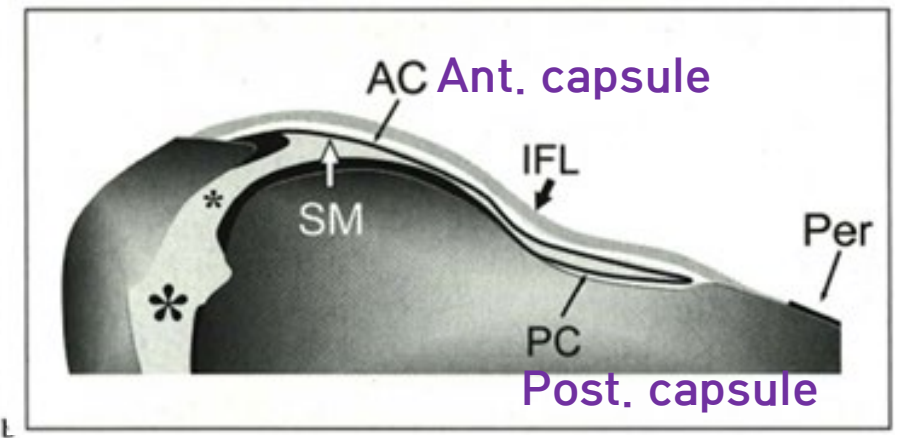
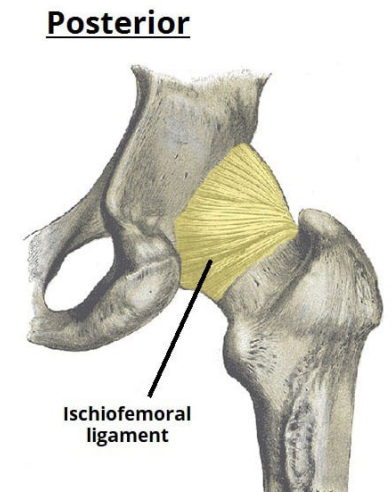
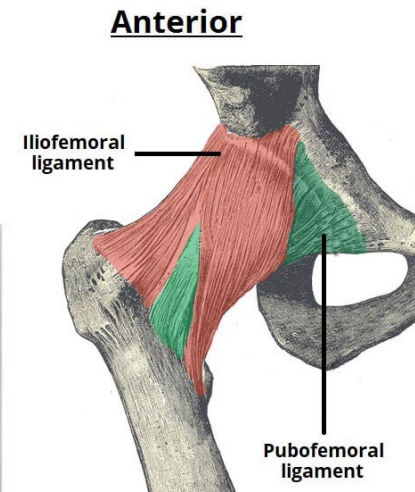
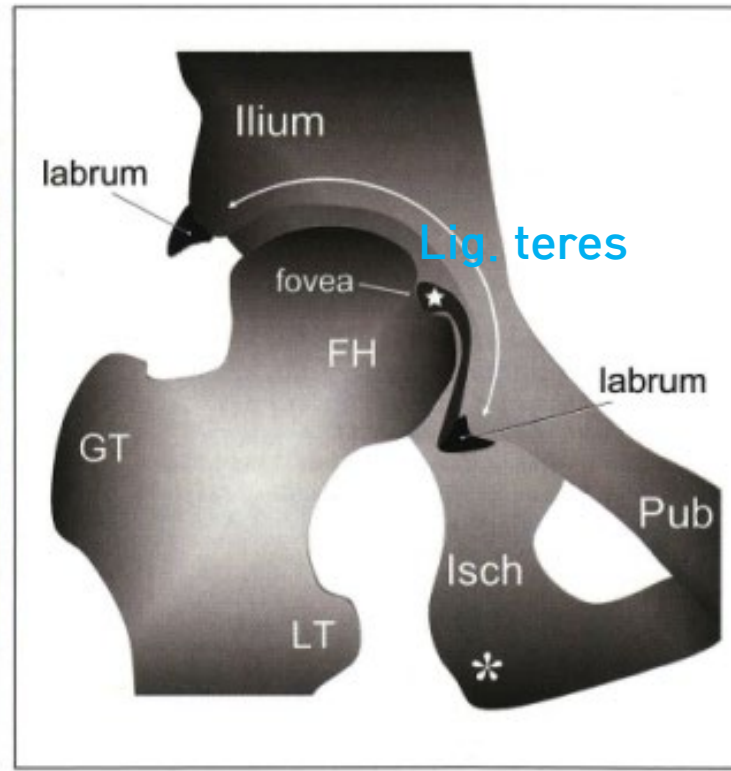
충남대학교병원 대전충청권역 의료재활센터

# Anatomy of Hip

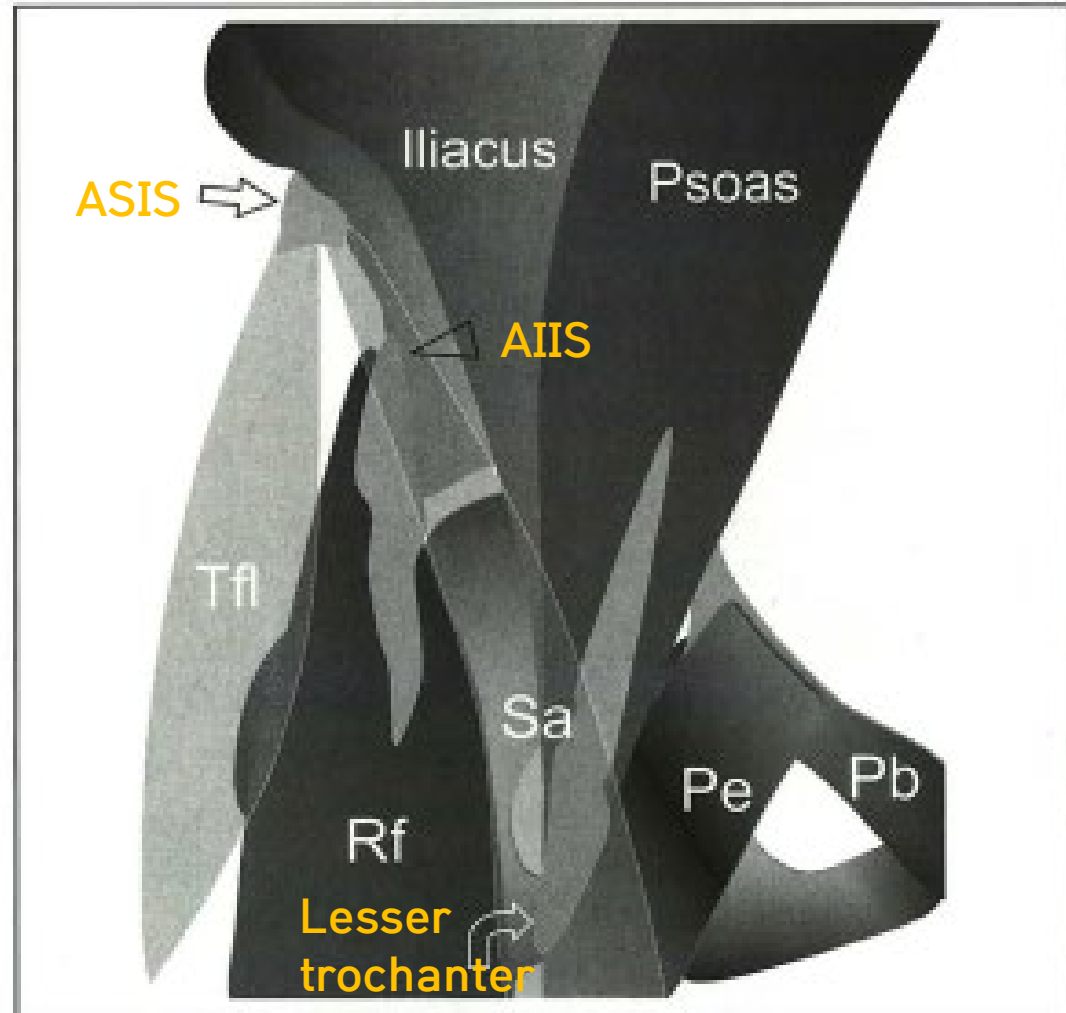
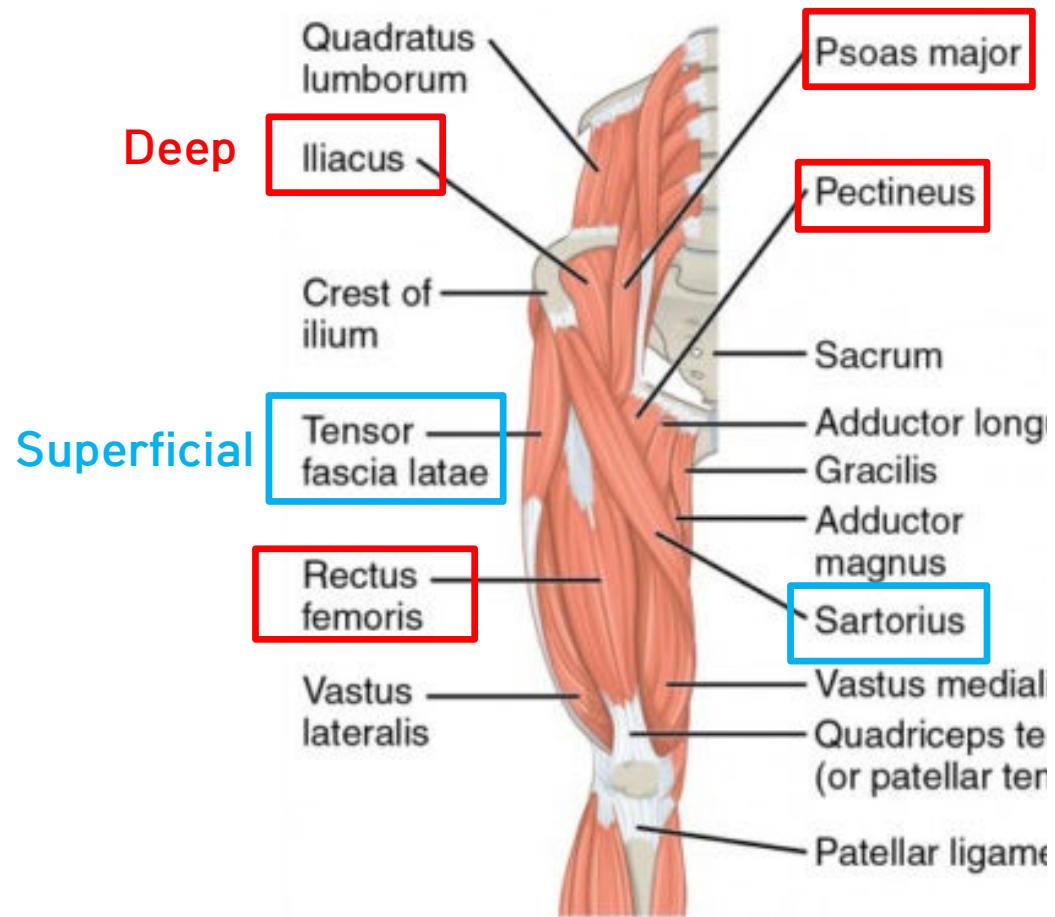


# Hip Joint Articular Anatomy

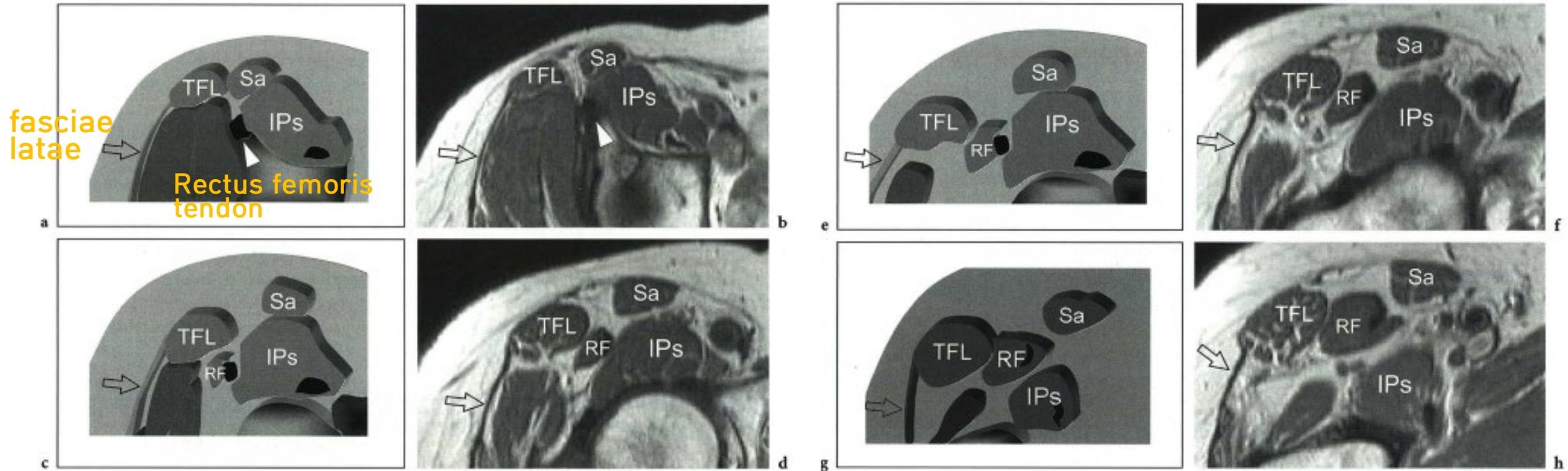
- Ball-and-socket joint



# Anterior Hip Muscles and Tendons

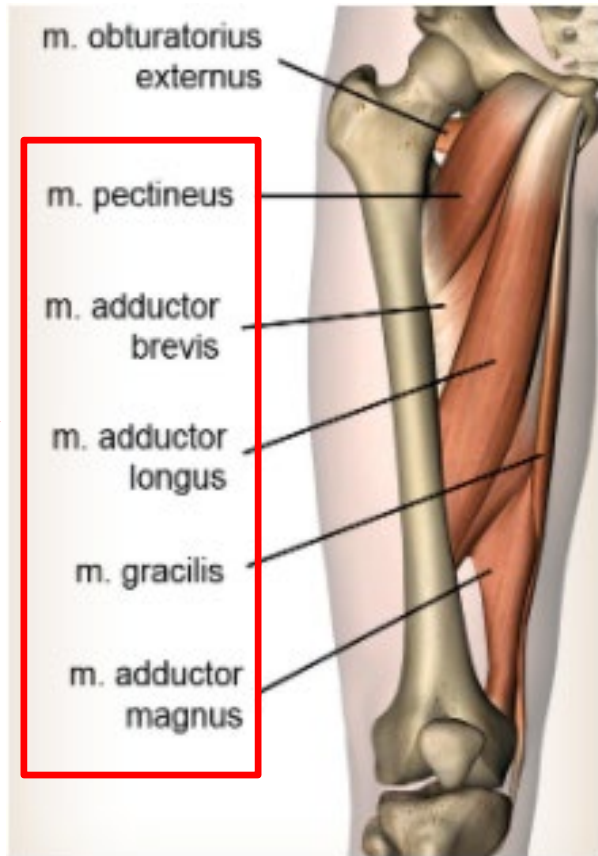


# Anterior Hip Muscles and Tendons

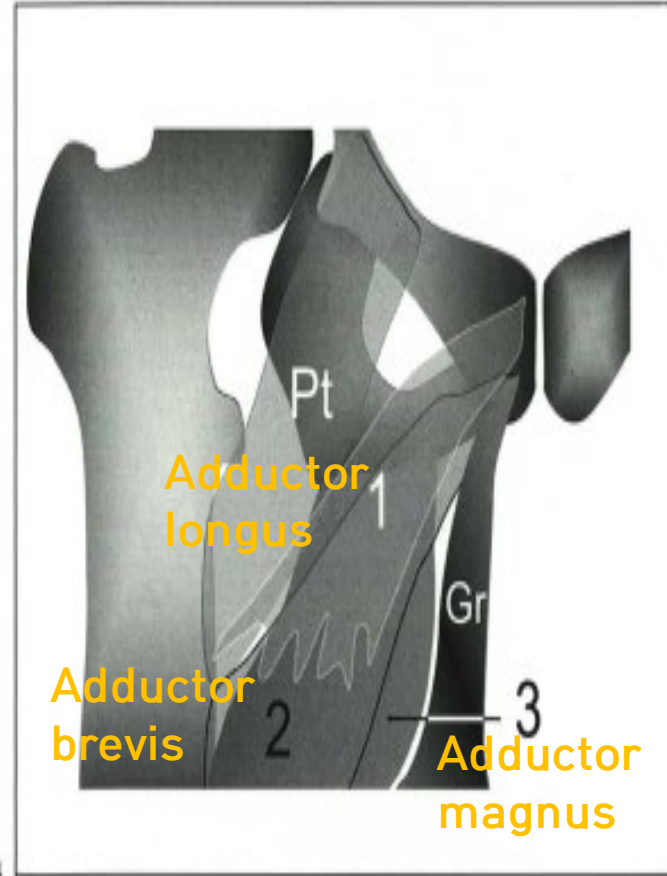


# Medial Hip Muscles and Tendons

Hip Abductor

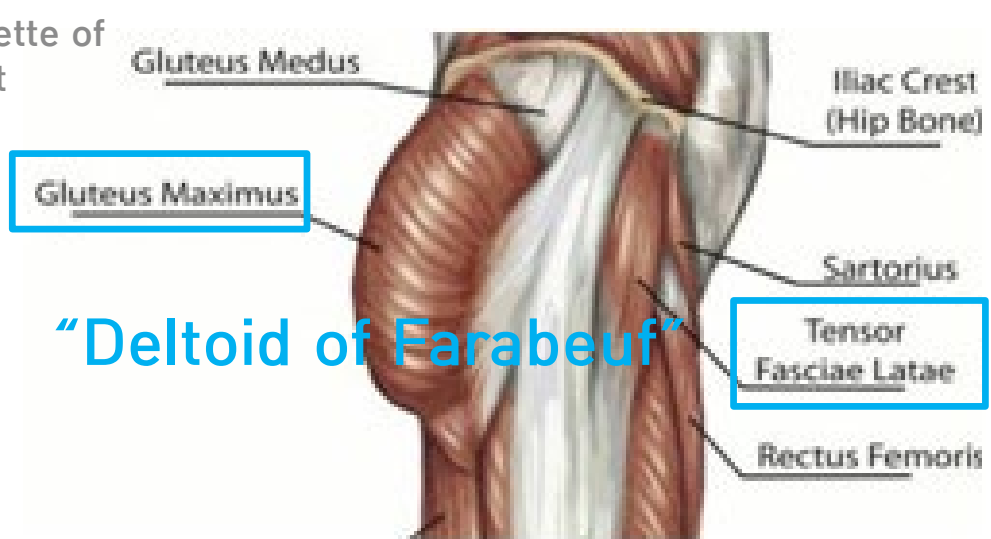
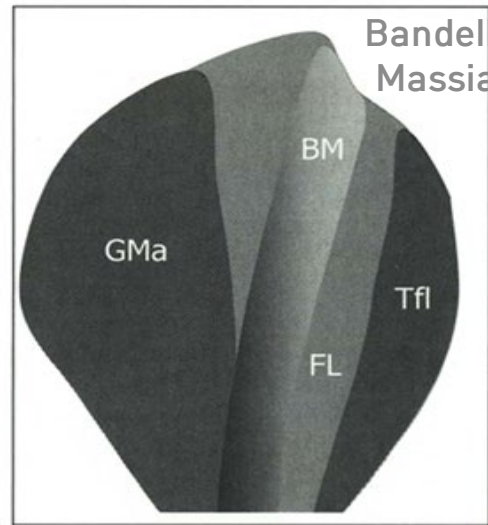


Hip Adductor



# Lateral Hip Muscles and Tendons

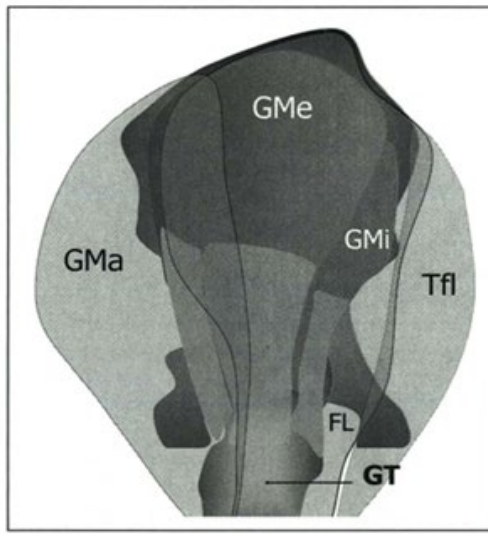
Superficial layer



“Deltoid of Farabeuf”

Deep layer

Abductor tendon cuff of hip

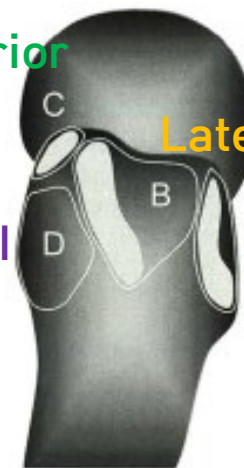


Posterosuperior

Lateral

Anterior

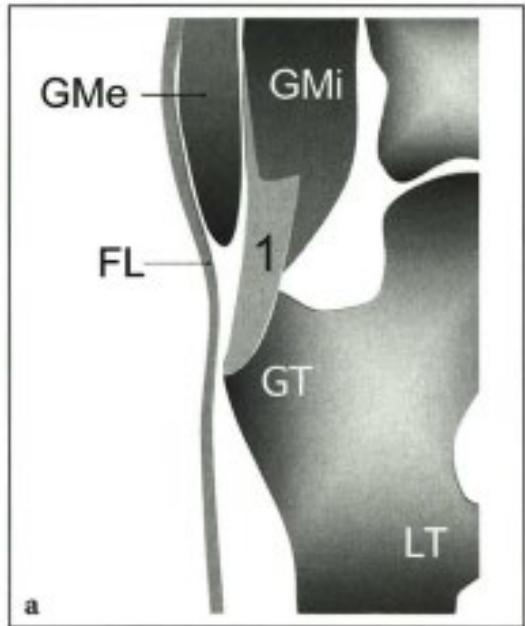
Inferolateral



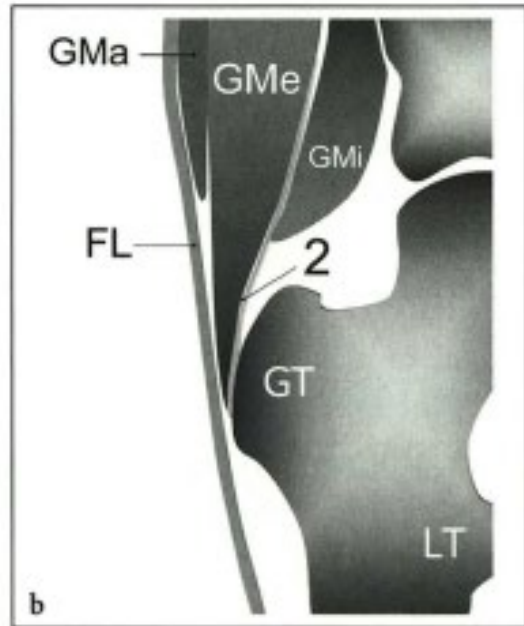
Greater Trochanter



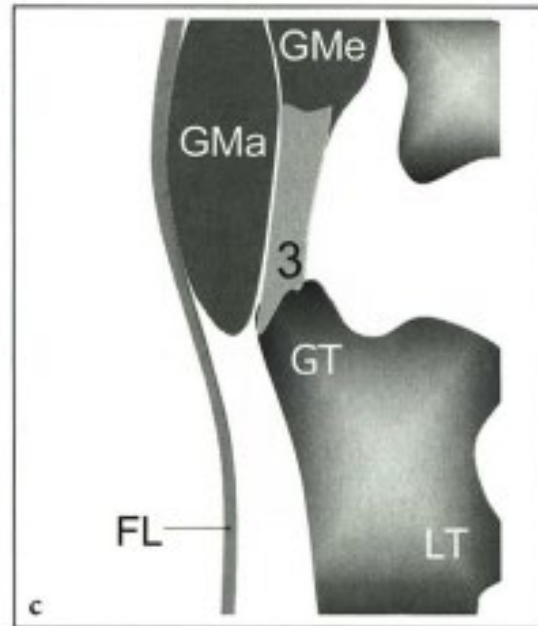
# Lateral Hip Muscles and Tendons



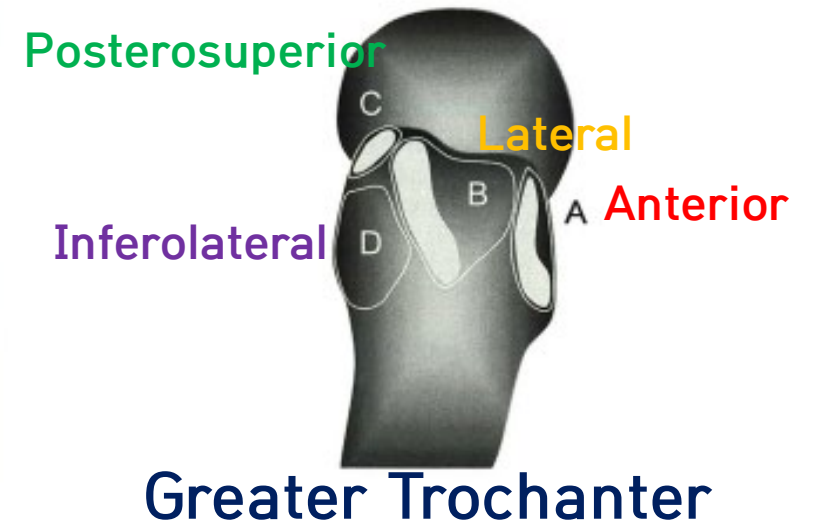
Anterior



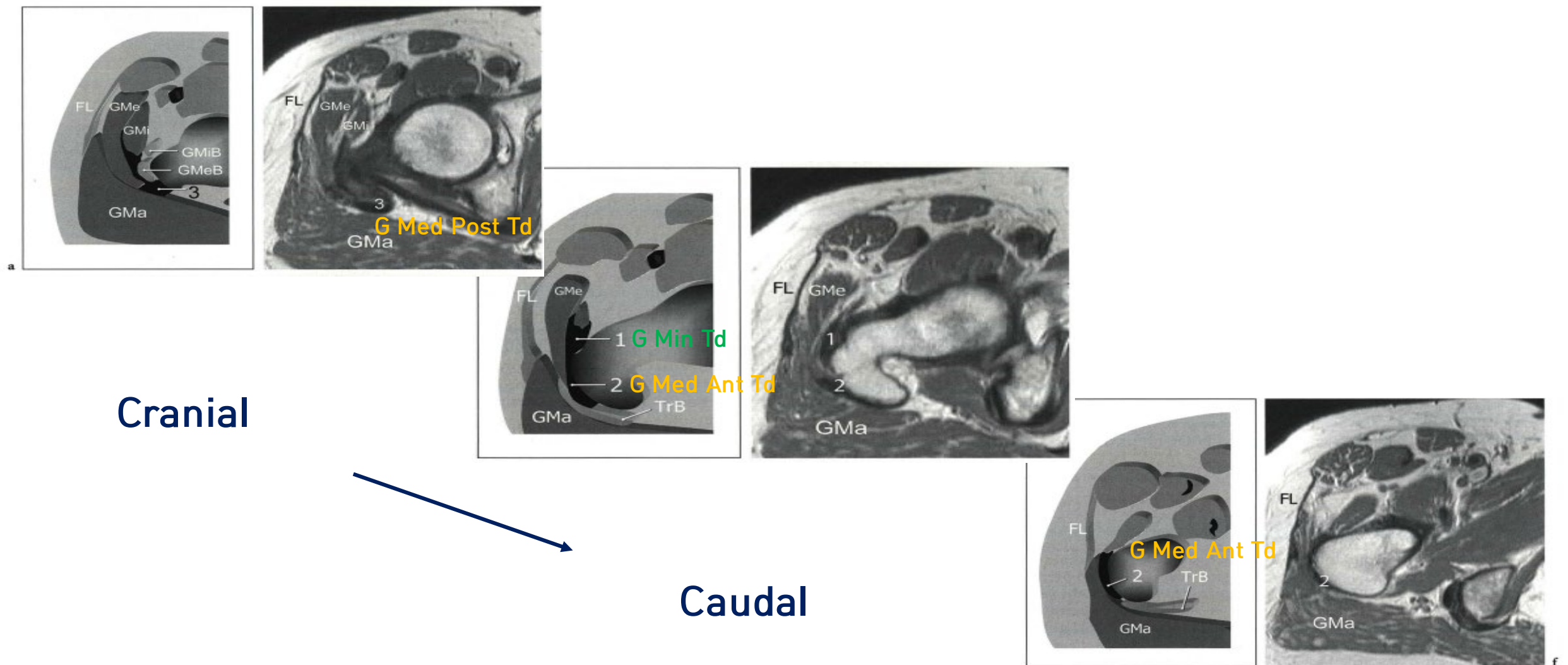
→  
Coronal view



Posterior



# Lateral Hip Muscles and Tendons

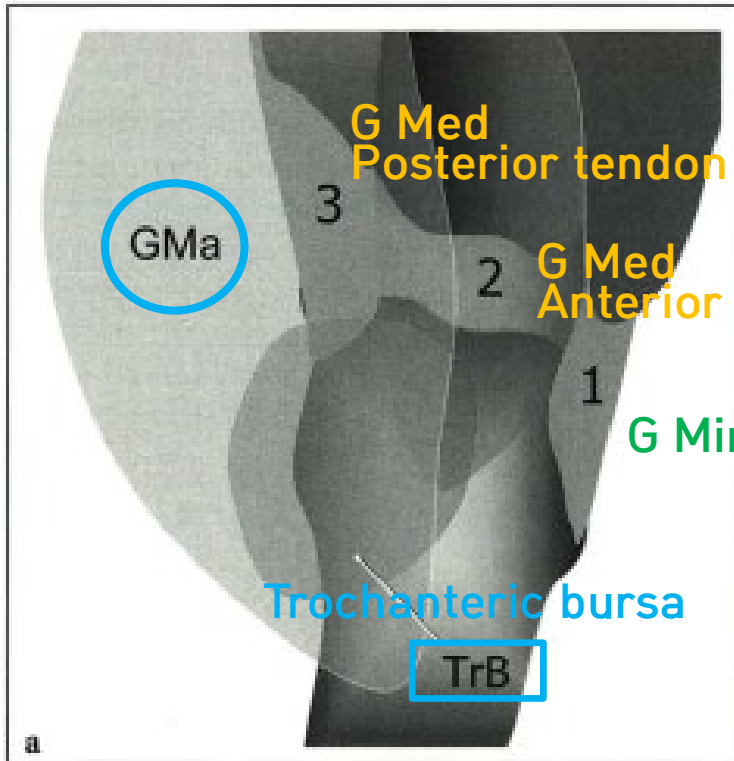


Cranial

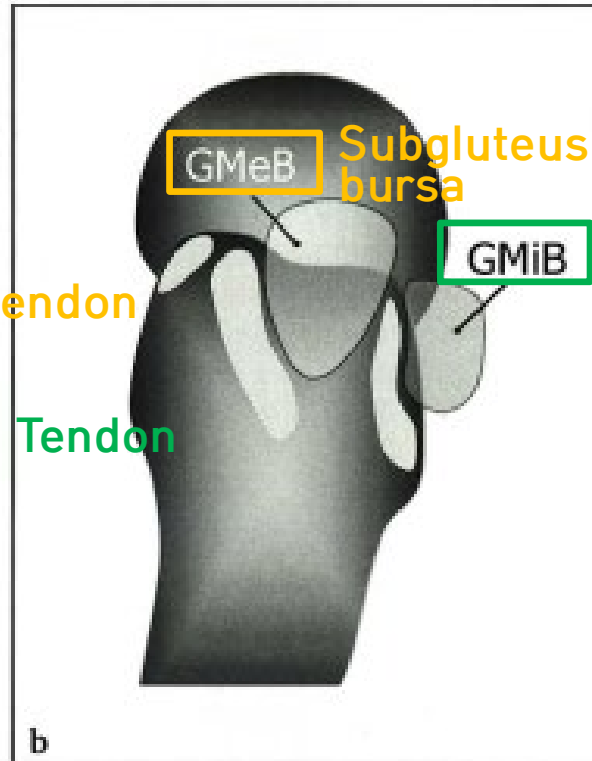
Caudal



# Lateral Hip Bursa

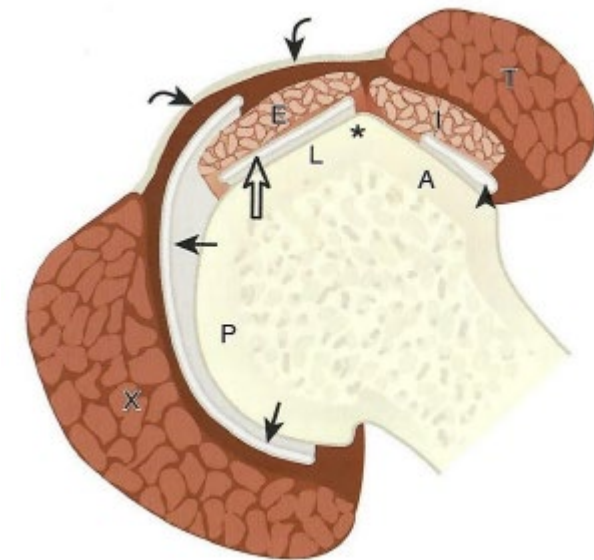


Subgluteus maximus bursa



Subgluteus medius bursa

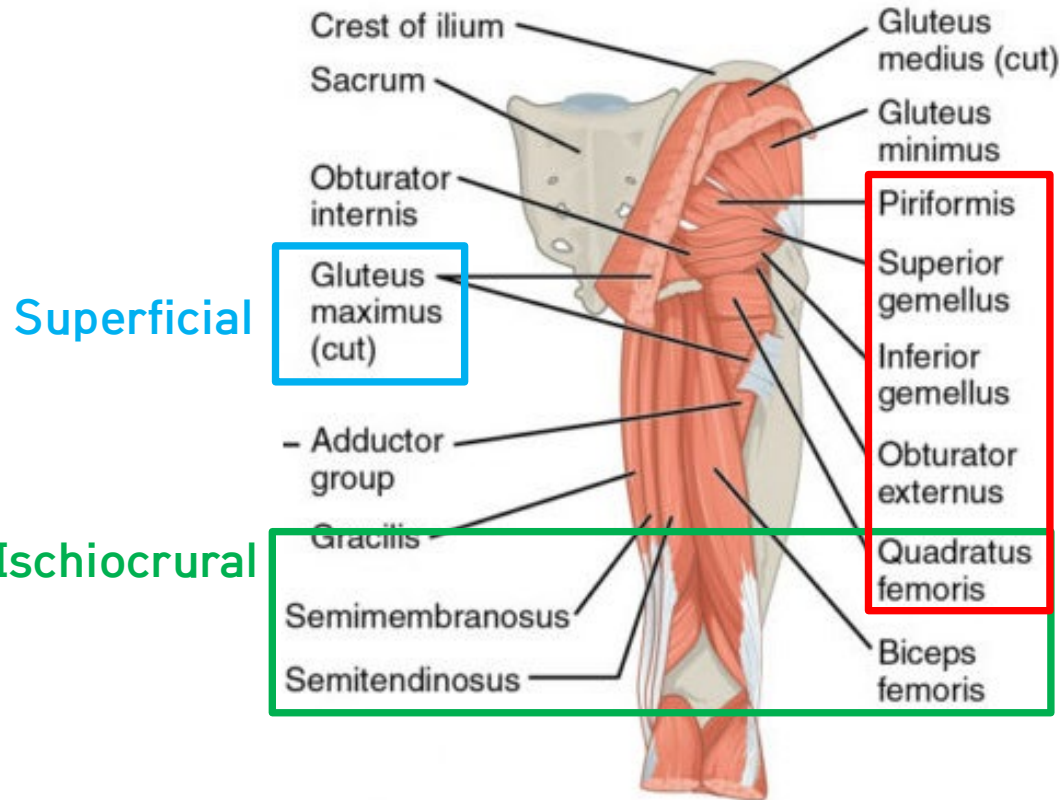
Subgluteus minimus bursa



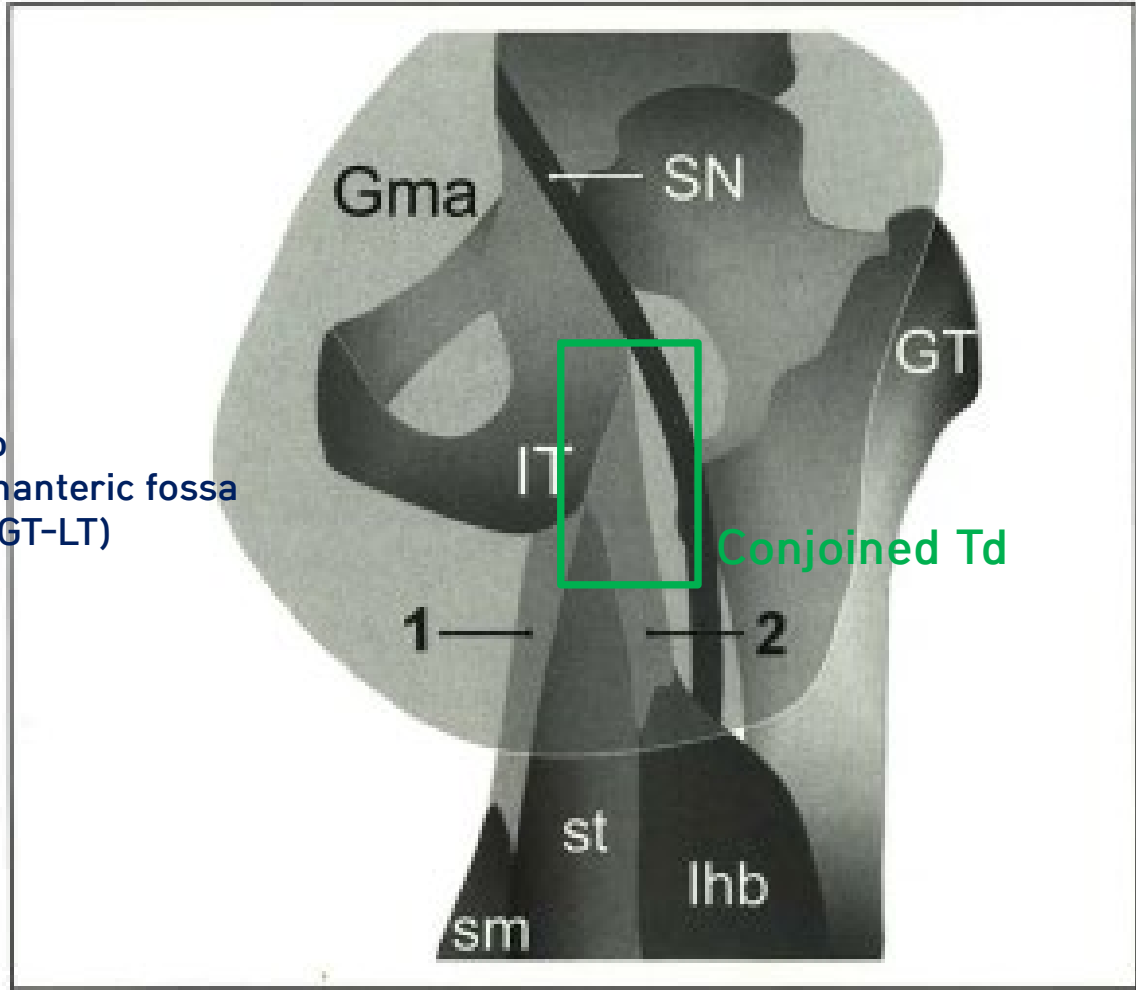
Axial view of GT



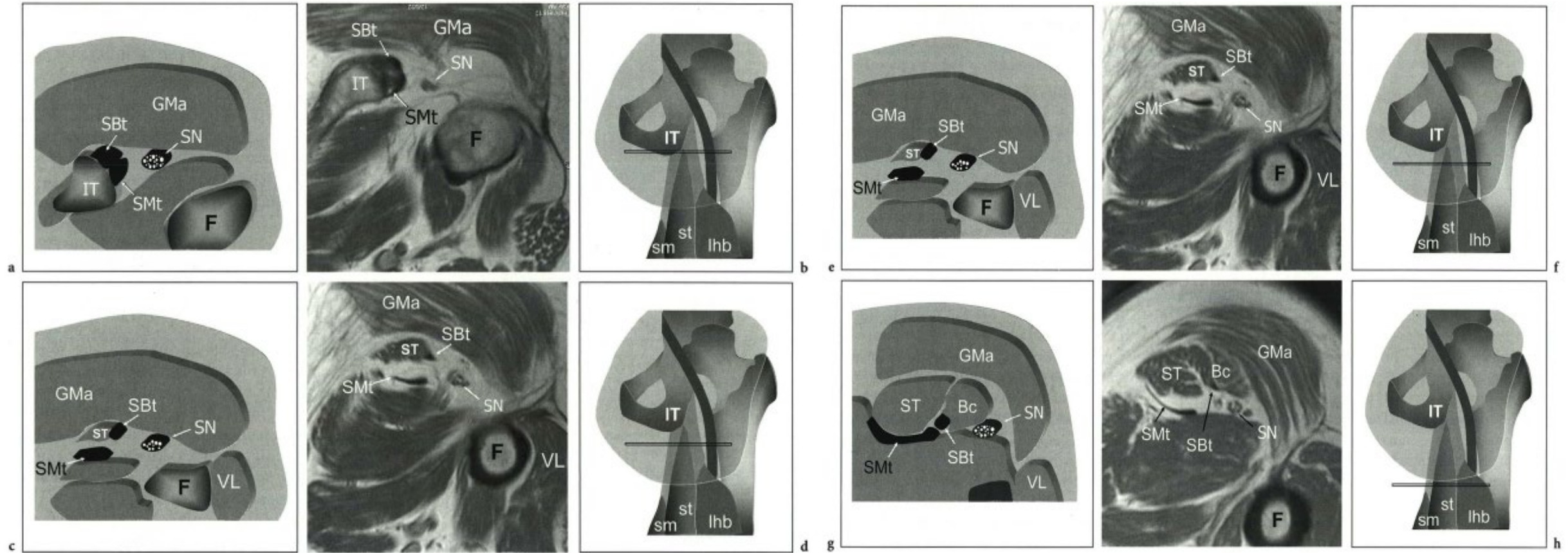
# Posterior Hip Muscles and Tendons



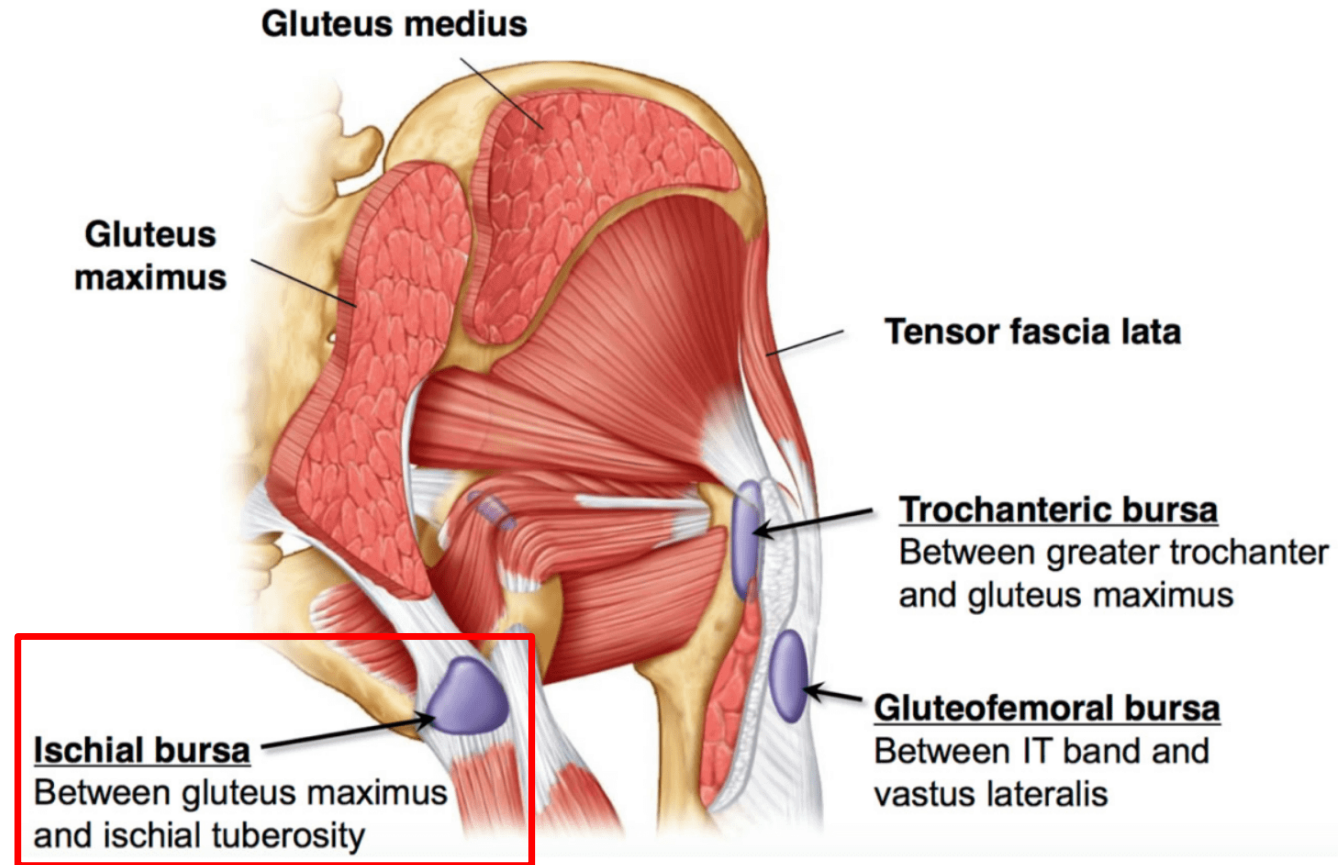
**Deep**  
Insert into  
post. trochanteric fossa  
(between GT-LT)



# Posterior Hip Muscles and Tendons



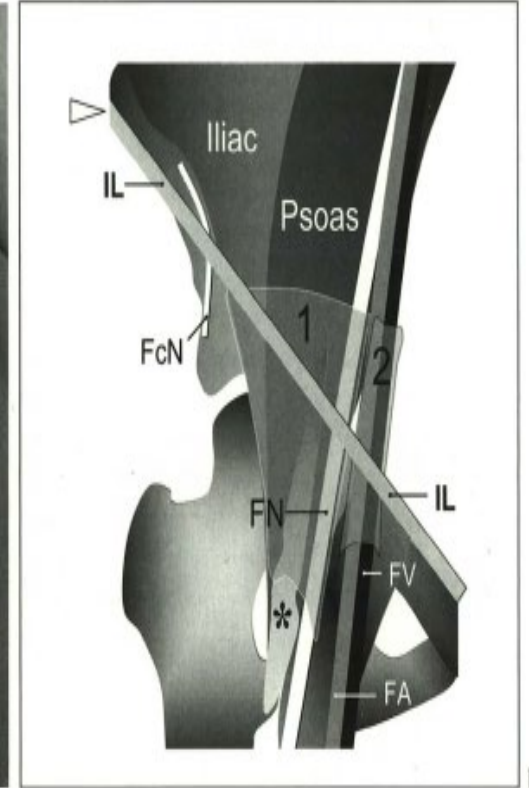
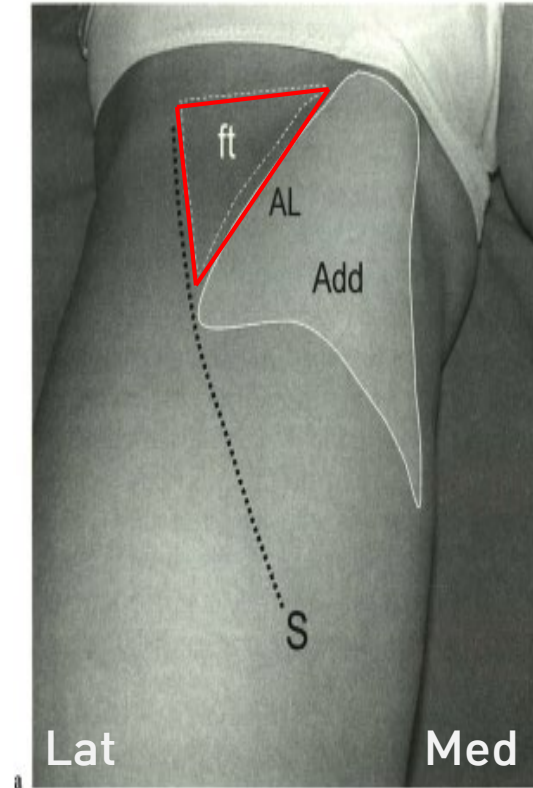
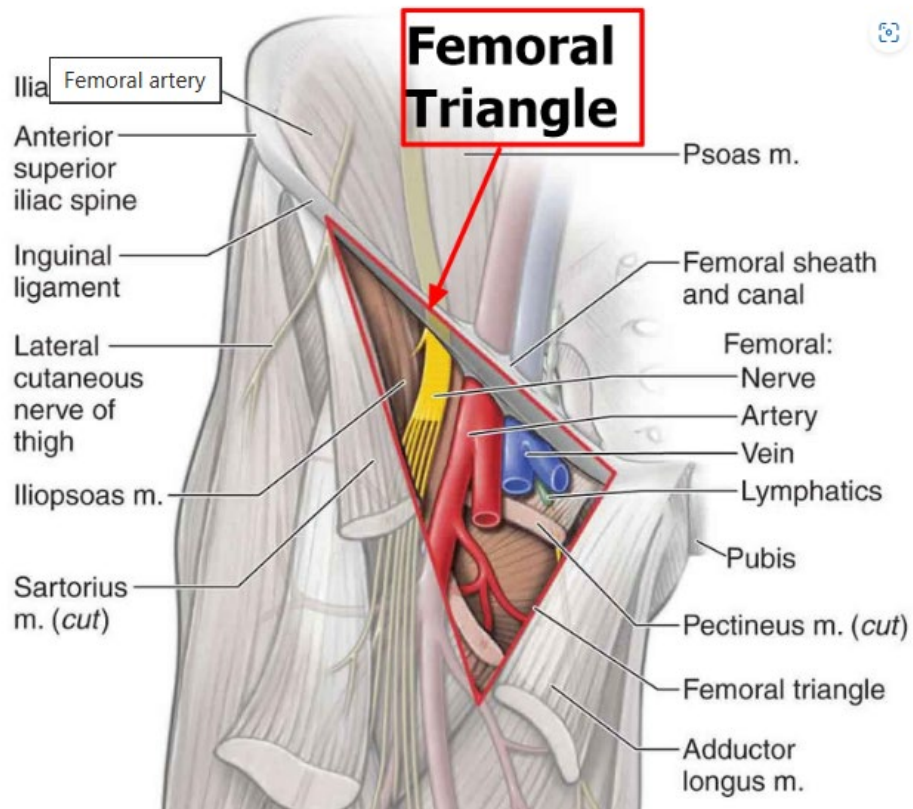
# Posterior Hip Bursa



Ischiogluteal bursa



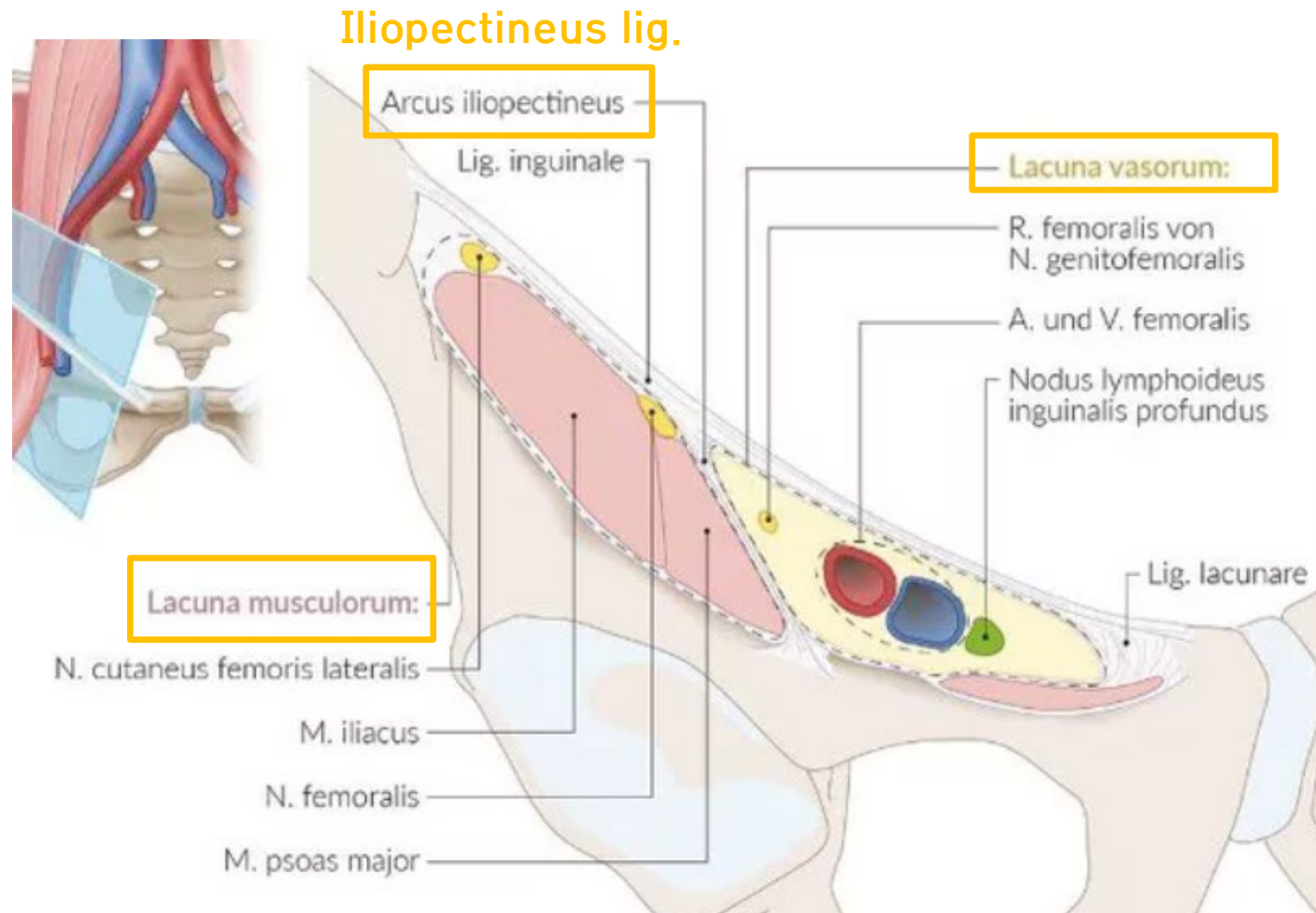
# Neurovascular Structure Femoral Triangle



1 : Iliac fascia  
2 : Femoral sheath (femoral A & V)

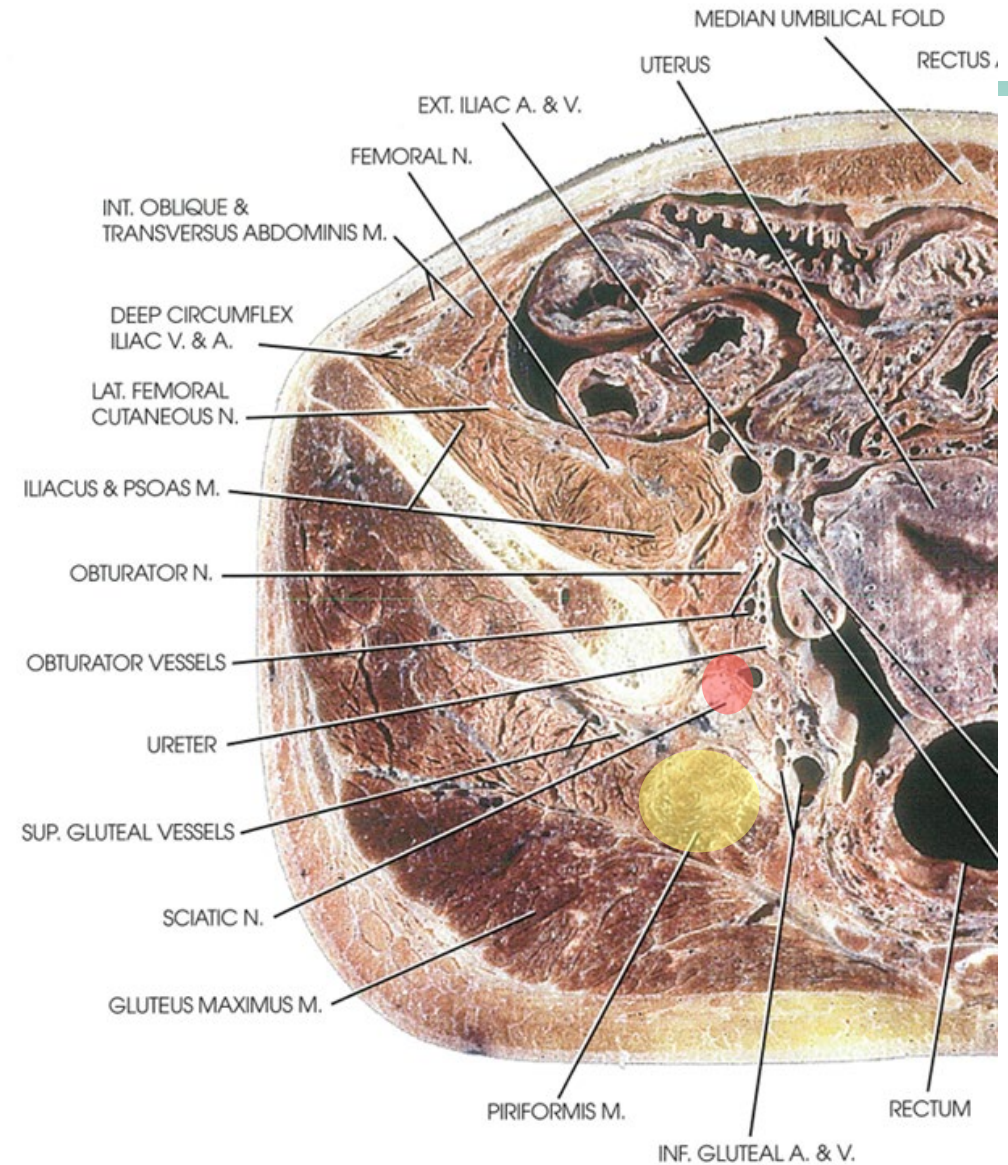
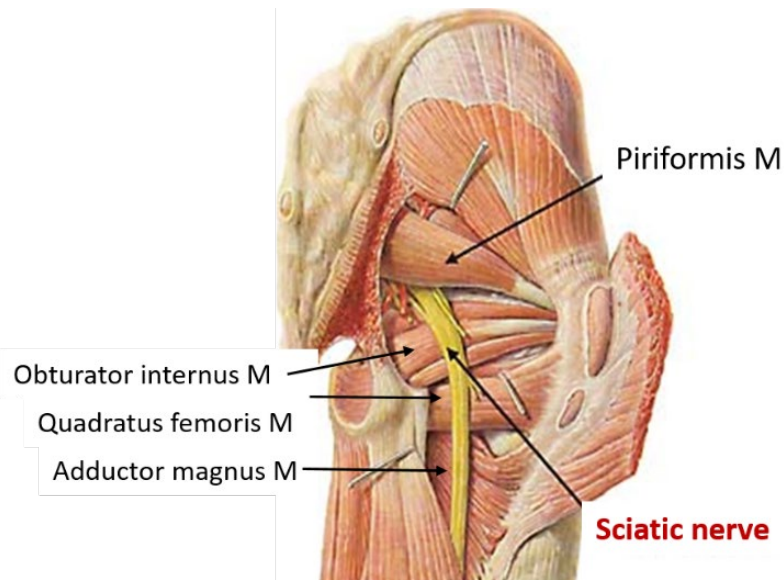


# Neurovascular Structure Femoral Triangle

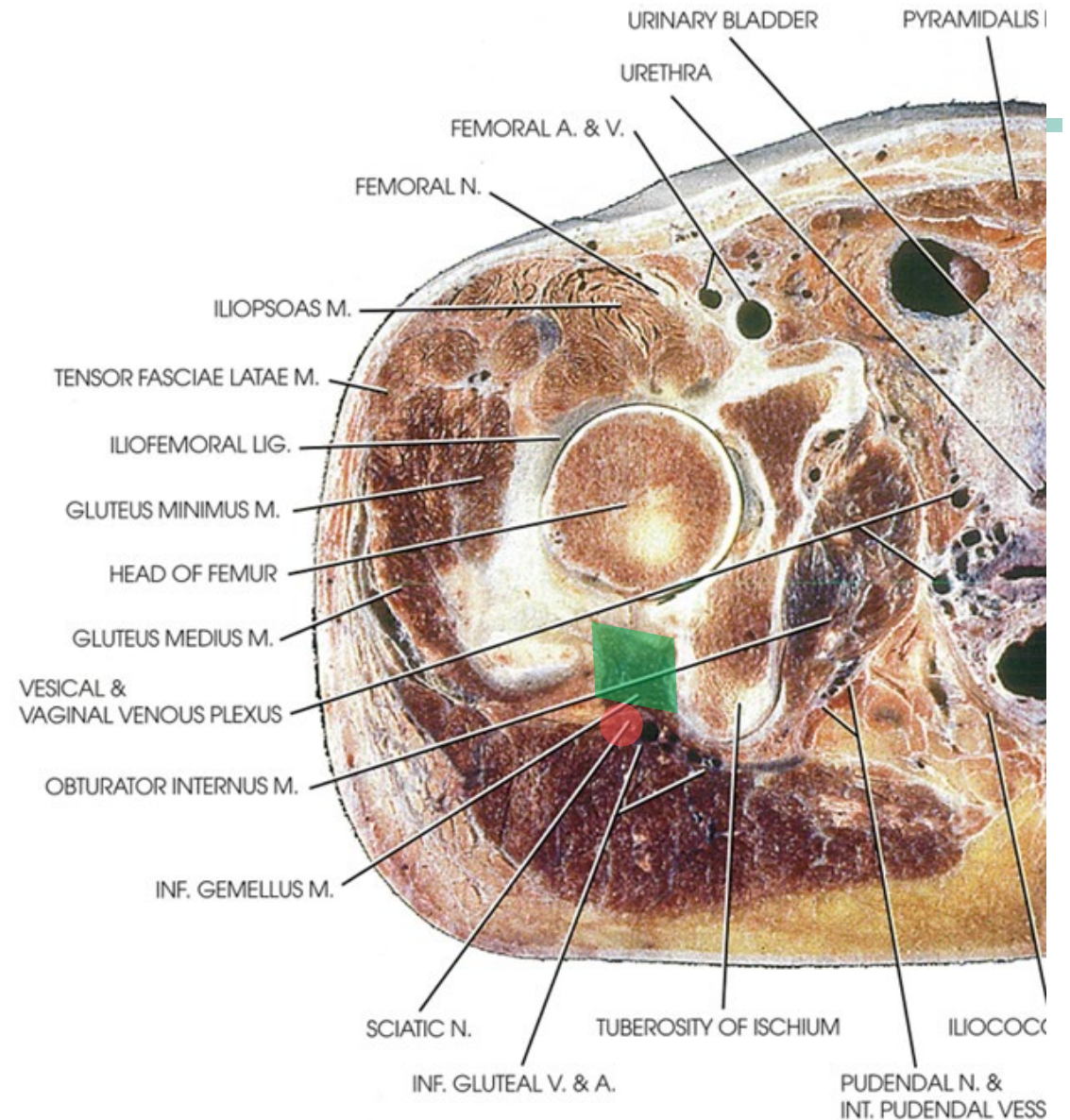
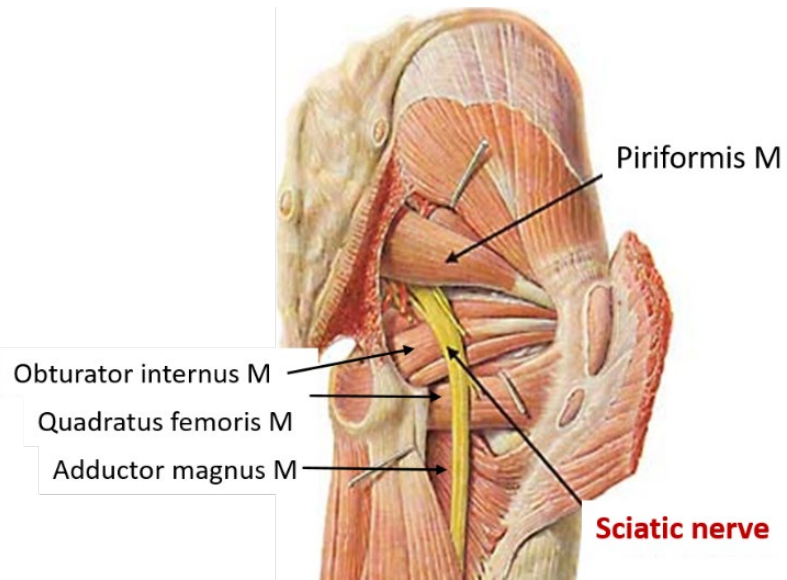


# Neurovascular Structure

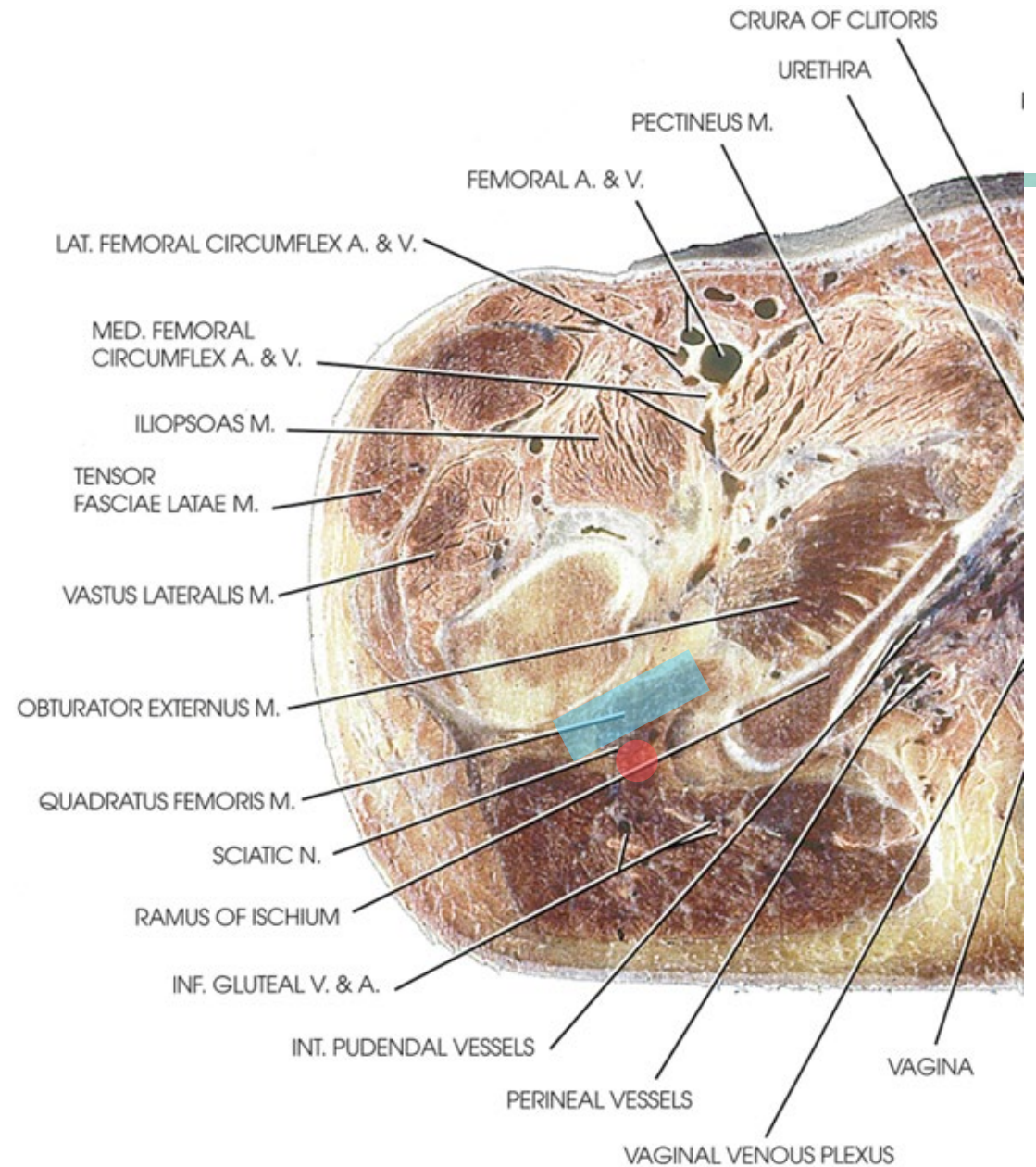
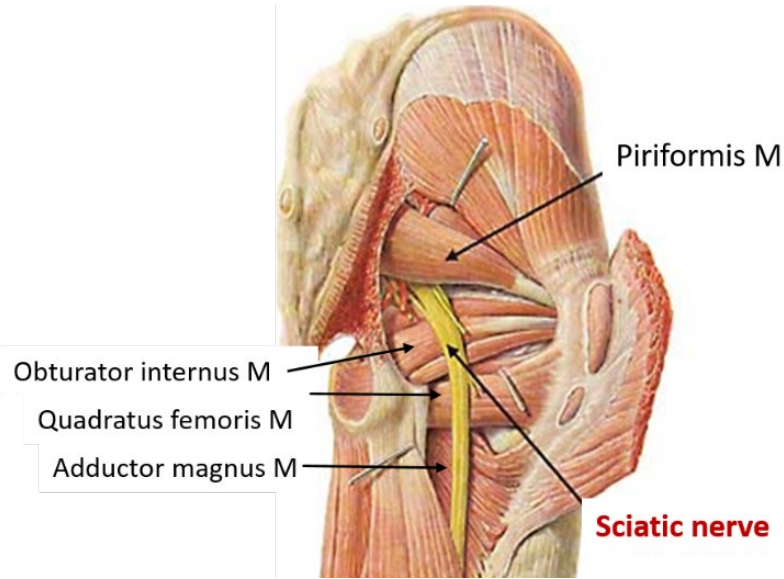
## Sciatic Nerve



# Neurovascular Structure Sciatic Nerve



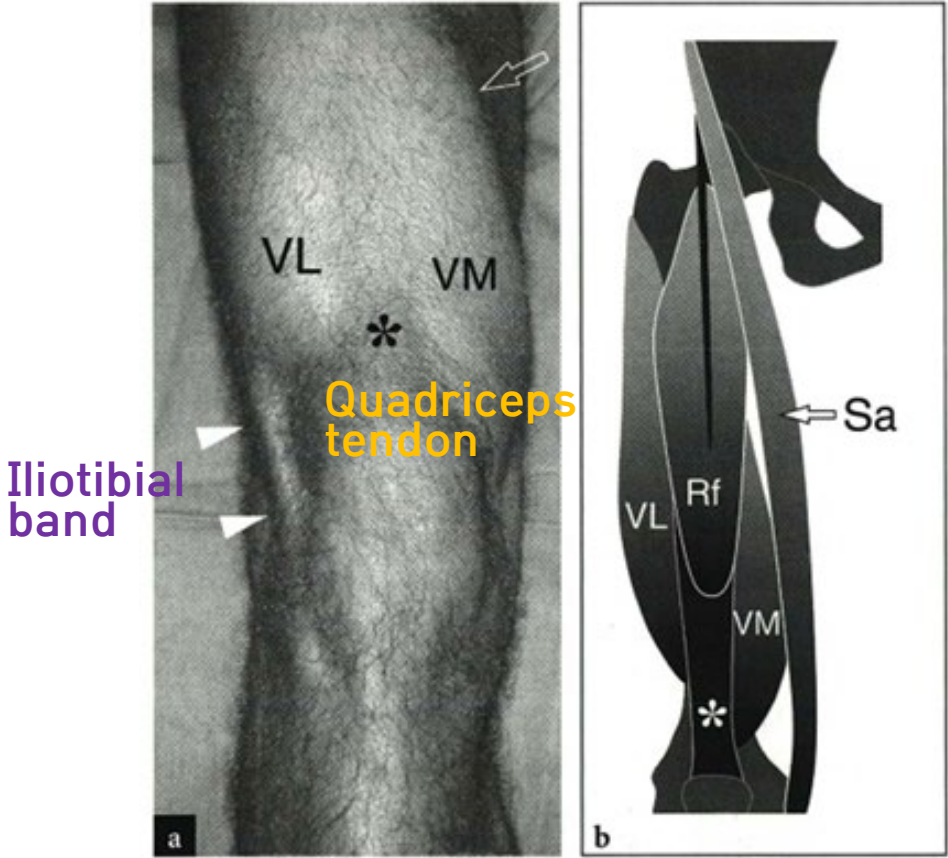
# Neurovascular Structure Sciatic Nerve



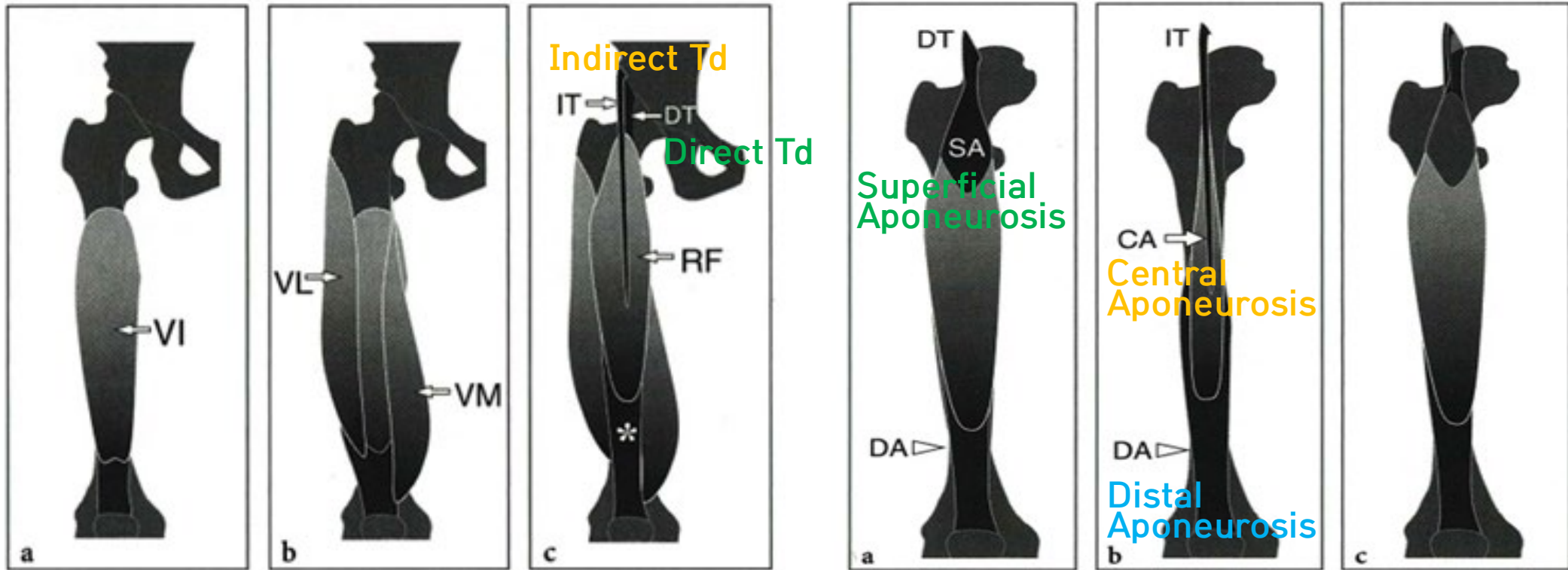
# Anatomy of Thigh



# Anterior Thigh Muscles and Tendons



# Anterior Thigh Muscles and Tendons



Deep

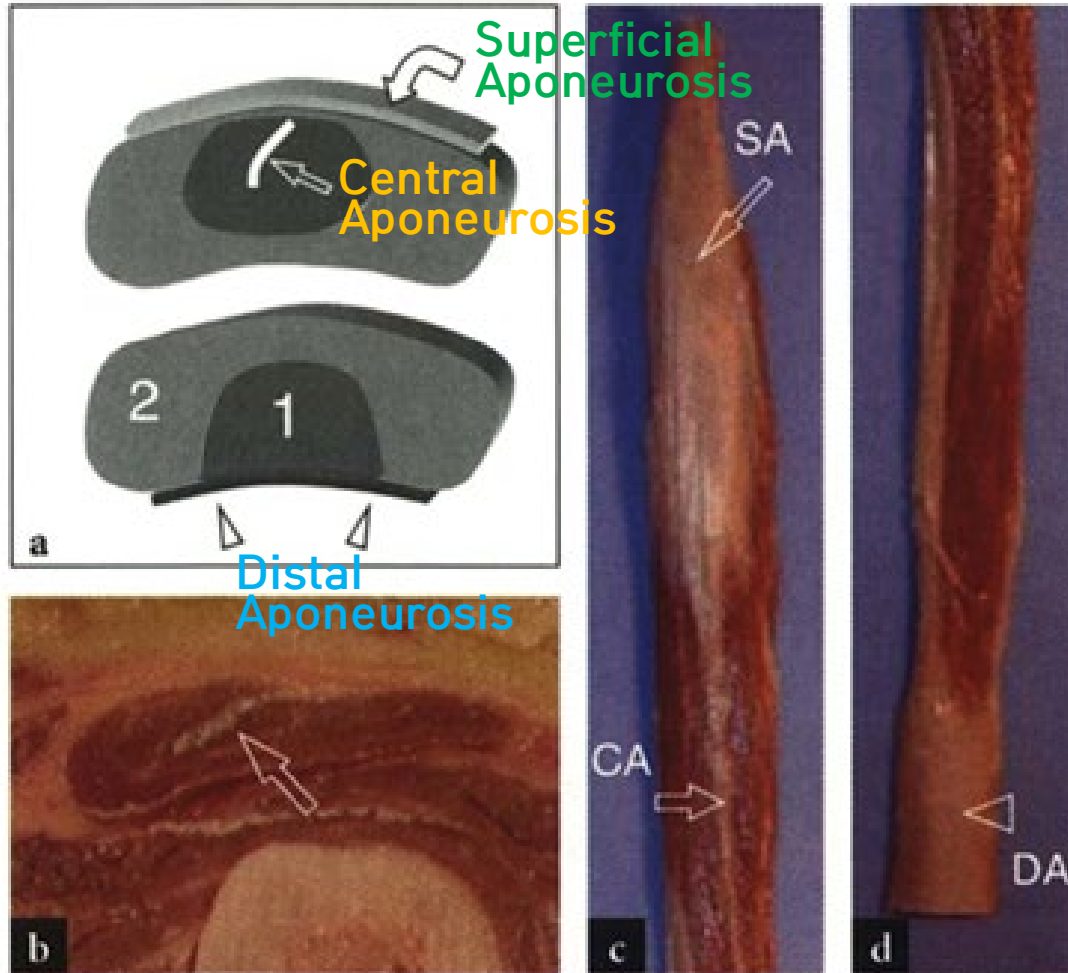


Superficial



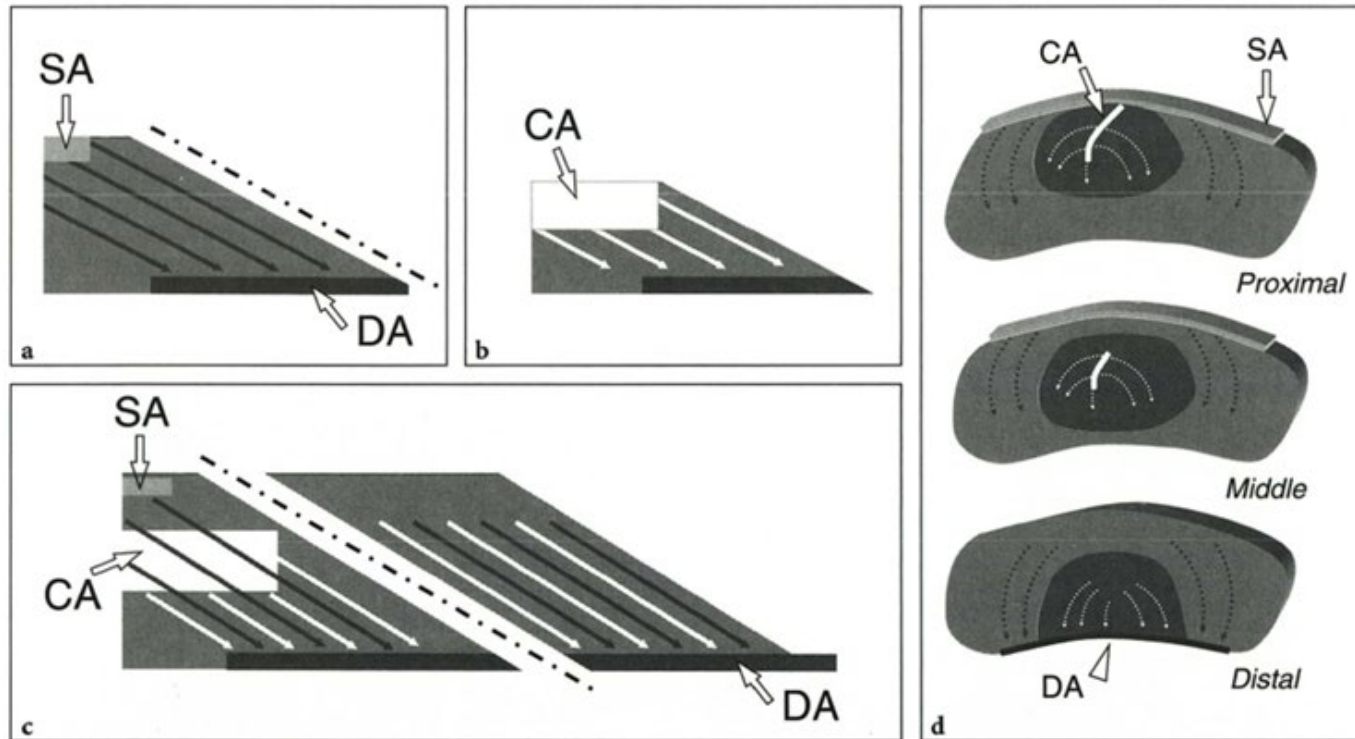
# Anterior Thigh Muscles and Tendons

“Muscle within muscle” structure of RF

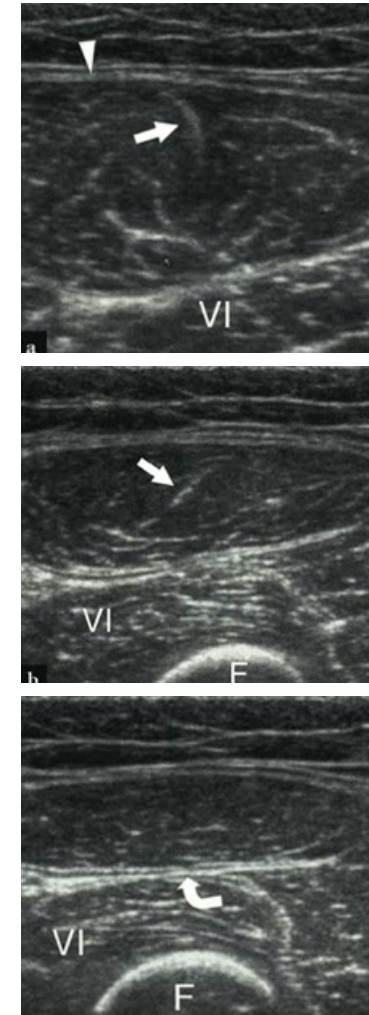


# Anterior Thigh Muscles and Tendons

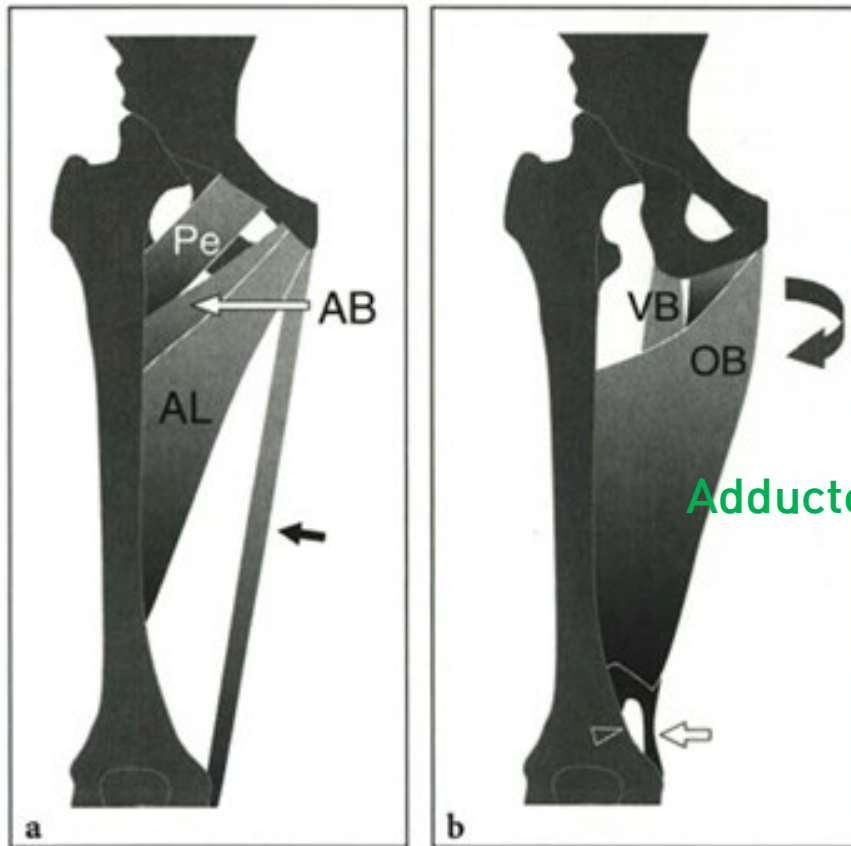
“Muscle within muscle” structure of RF



Small inner bipennate muscle completely surrounded by large unipennate muscle.



# Medial Thigh Muscles and Tendons

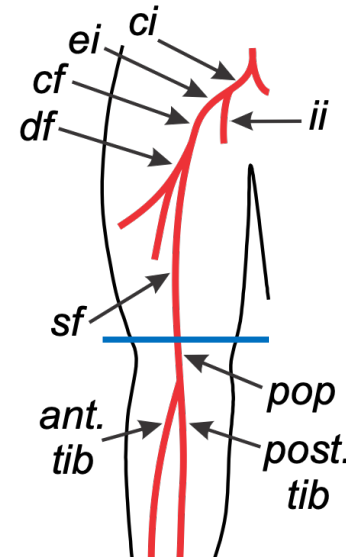


Superficial → Deep



Adductor Magnus

Adductor Hiatus  
(Hunter canal)

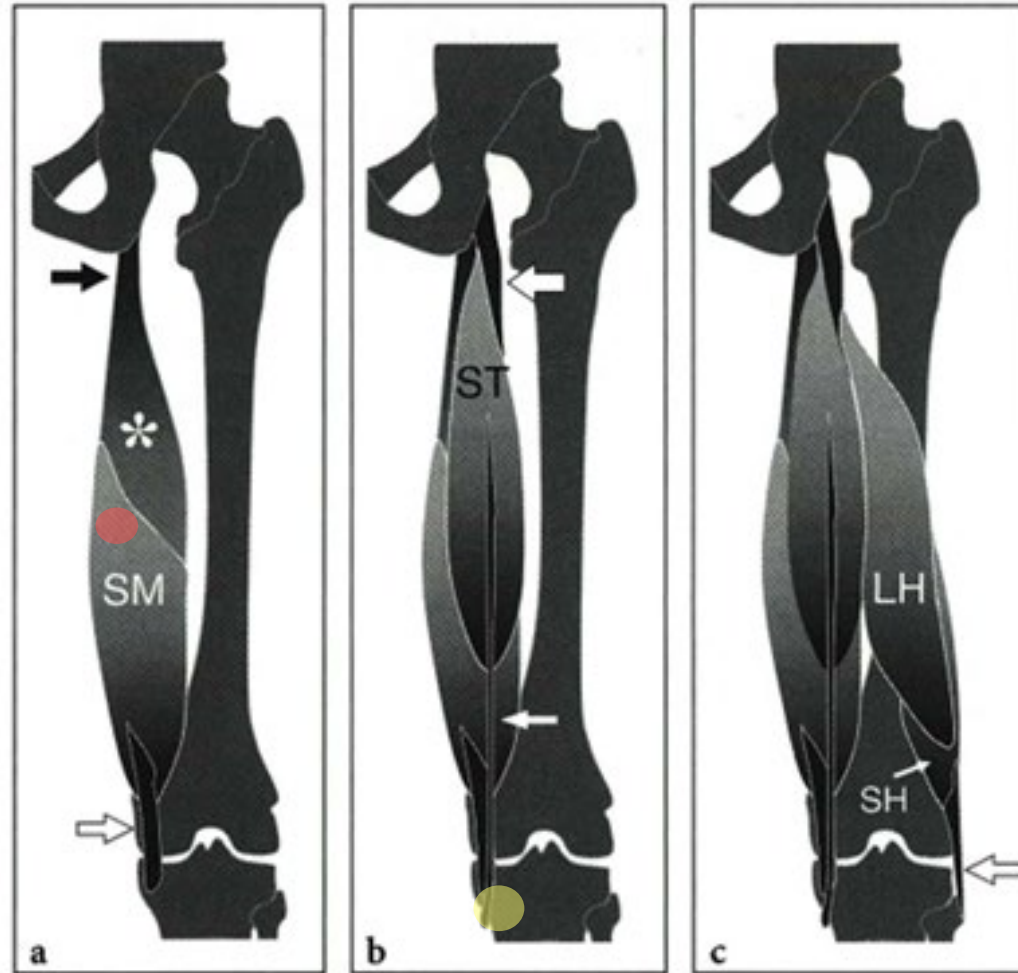


*ci* = common iliac artery  
*ei* = external iliac artery  
*ii* = internal iliac artery  
*cf* = femoral artery  
*df* = deep femoral artery  
*sf* = superficial femoral artery  
*pop* = popliteal artery  
*ant. tib* = anterior tibial artery  
*post. tib* = posterior tibial artery



# Post Thigh Muscles and Tendons

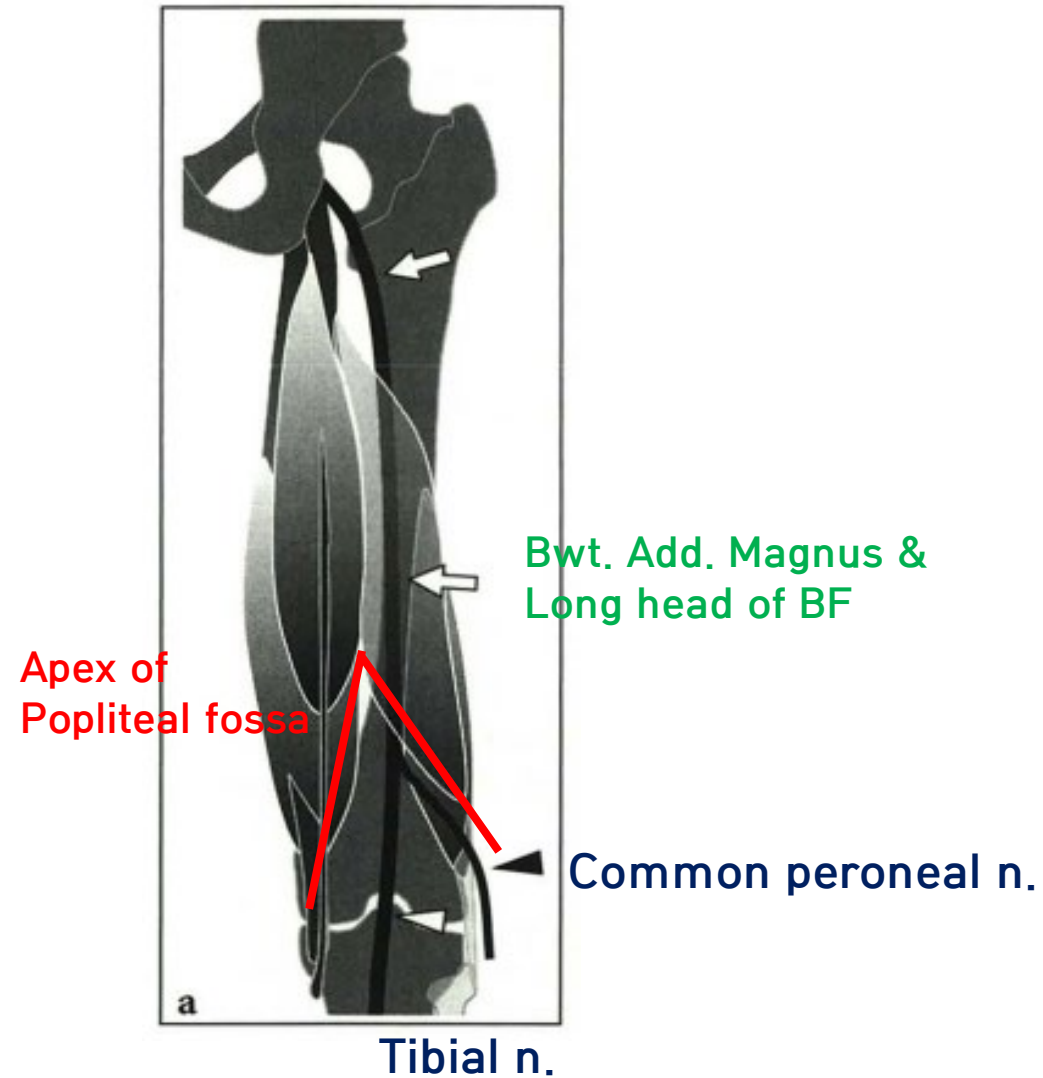
Ischiocrural  
(Hamstring)  
muscle



Deep → Superficial



# Post Thigh Sciatic Nerve



경청해 주셔서 감사합니다.

